



## Explosion Proof Actuator with Supervision

The patented explosion proof actuator with supervision is specifically designed for hazardous gas environments and is UL HazLoc, ATEX, and IECEx certified. Uniquely designed as a top-mounted linear actuator, it does not act as a pressure vessel on the discharge valve, reducing the number of potential leak points in the system. The integrated supervisory feature provides fully engaged installation detection. Due to special design features and material grade selection, the actuator acts as its own enclosure. The actuator's force output can be specified to accommodate any system's operating pressure up to 300 bar.

### Features & Benefits

- + UL HazLoc, ATEX, and IECEx certified
- + Top-mounted actuator acts as enclosure, eliminating the need for additional components
- + Reduces potential leak points in the system
- + Integrated supervision with 6-wire standard plus internal grounding wire
- + Force output can be matched to any system's operating pressure up to 300 bar
- + Freely rotates for easy installation
- + Resettable after activation
- + Enclosure components and flame paths produced from passivated 304SS
- + No brass, bronze, or copper in exterior components
- + Engineering expertise to help achieve UL, FM, CE, LPCB, & VdS certifications and listings

### Add-On Features

Manual actuation and reset tool options



Manual Reset Tool (aluminum)



Push Button Manual Actuator (stainless steel)



Lever Action Manual Actuator (stainless steel)



Lever Action Manual/Pneumatic Actuator (stainless steel)



The explosion proof actuator with supervision is specifically designed for hazardous gas environments and meets the UL and NFPA requirements for these systems.

#### Technical Data (custom configurations available)

**UL US File E492320**

- + Class I, Division 1, Groups A, B, C & D, T5
- + Class I, Zone 1, AEx db IIC T5 Gb
- + Ex db IIC T5 Gb
- + Type 4X Enclosure
- + IP66

**UL 21 ATEX 2557X**

- +  $\text{CE}$  0539  $\text{Ex}$  II 2 G Ex db IIC T5 Gb

**IECEX UL 21.0050X**

- + Ex db IIC T5 Gb

#### Operating Conditions

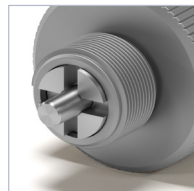
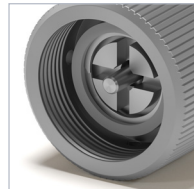
- +  $-20^{\circ}\text{C} \leq T_{\text{amb}} \leq +65^{\circ}\text{C}$
- + Continuous duty, 24 Vdc, 0.5 A Nominal

*All TLX components are customized to fit system requirements, meaning technical specifications are unique to each customer and design. Examples given are for illustration purposes only.*

#### Customizations

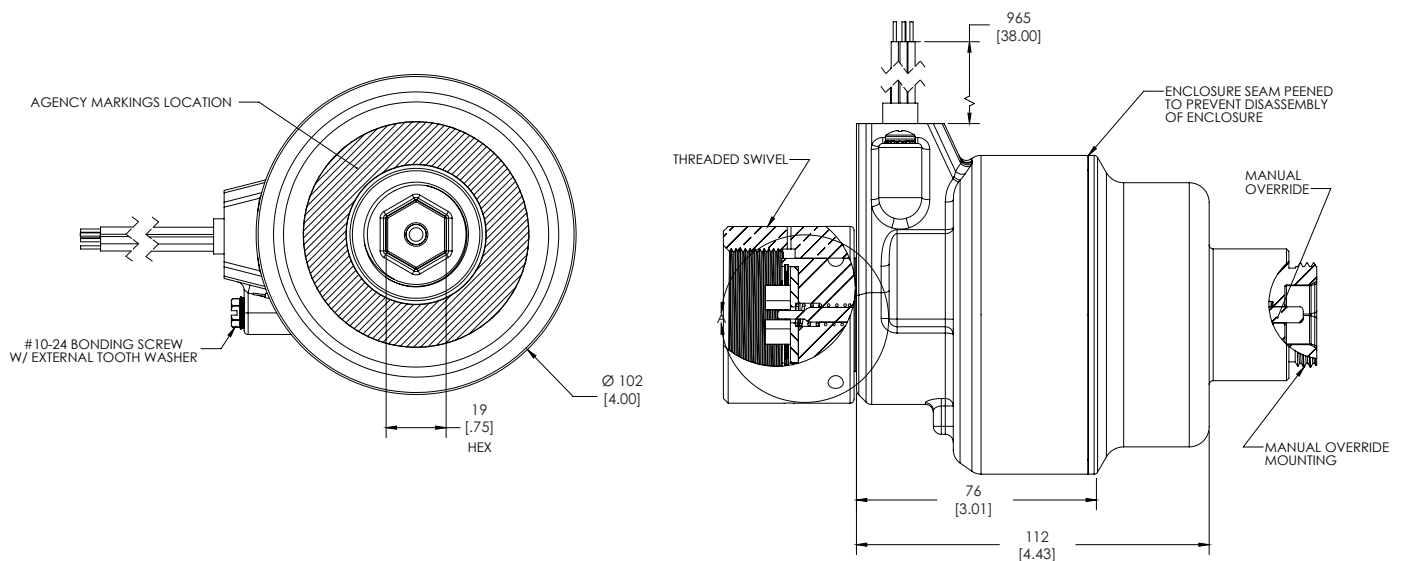
The discharge valve interface can be customized to match your valve configuration.

- + Thread size
- + Thread type
- + Pin stick out
- + Pin stroke



Female/Male Thread Connection Options

#### Dimensional Drawings (dimensions in millimeters [inches])



---

**Legal Disclaimer Notice**

ALL PRODUCT, PRODUCT SPECIFICATIONS, AND DATA ARE SUBJECT TO CHANGE WITHOUT NOTICE TO IMPROVE RELIABILITY, FUNCTION, DESIGN OR OTHERWISE.

TLX Technologies, LLC makes no warranty, representation or guarantee regarding the suitability of the products for any particular purpose or the continuing production of any product. To the maximum extent permitted by applicable law, TLX Technologies disclaims (i) any and all liability arising out of the application or use of any product, (ii) any and all liability, including without limitation special, consequential or incidental damages, and (iii) any and all implied warranties, including warranties of fitness for particular purpose, non-infringement and merchantability.

Statements regarding the suitability of products for certain types of applications are based on TLX Technologies' knowledge of typical requirements that are often placed on TLX Technologies' products in generic applications. Such statements are not binding statements about the suitability of products for a particular application. It is the customer's responsibility to validate that a particular product with the properties described in the product specification is suitable for use in a particular application. Parameters provided in data sheets and/or specifications may vary in different applications, and performance may vary over time. All operating parameters, including typical parameters, must be validated for each customer application by the customer's technical experts. Product specifications do not expand or otherwise modify TLX Technologies' terms and conditions of purchase, including but not limited to the warranty expressed therein.

No license, express or implied, by estoppel or otherwise, to any intellectual property rights is granted by this document or by any conduct of TLX Technologies. Product names and markings noted herein may be trademarks of their respective owners.