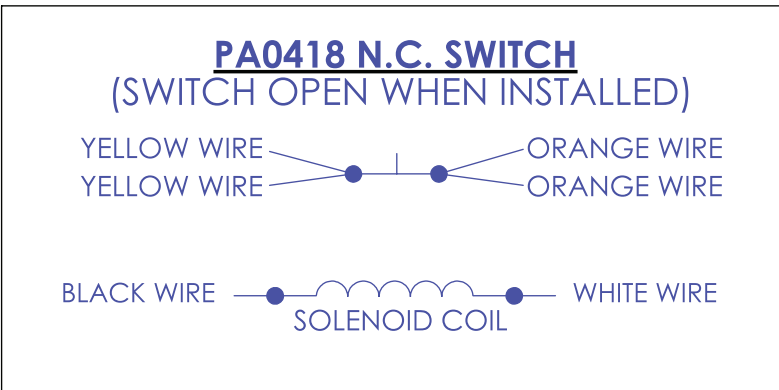
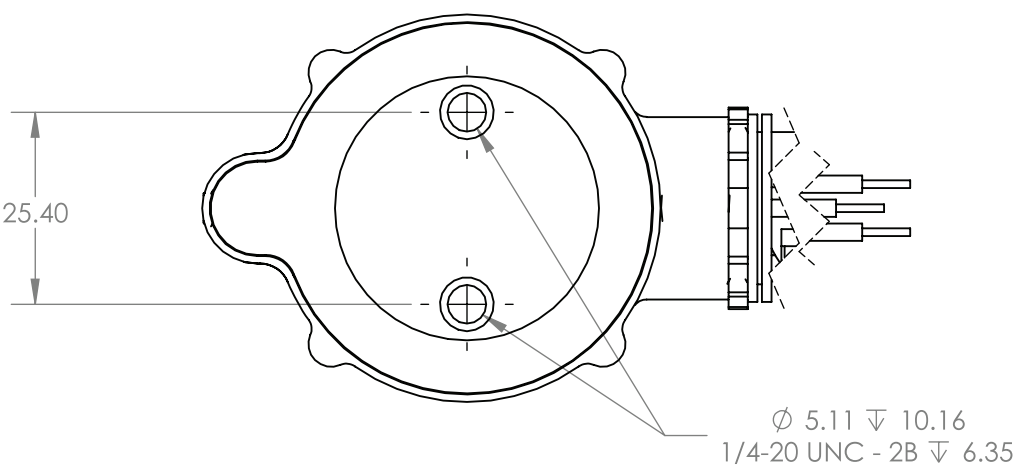
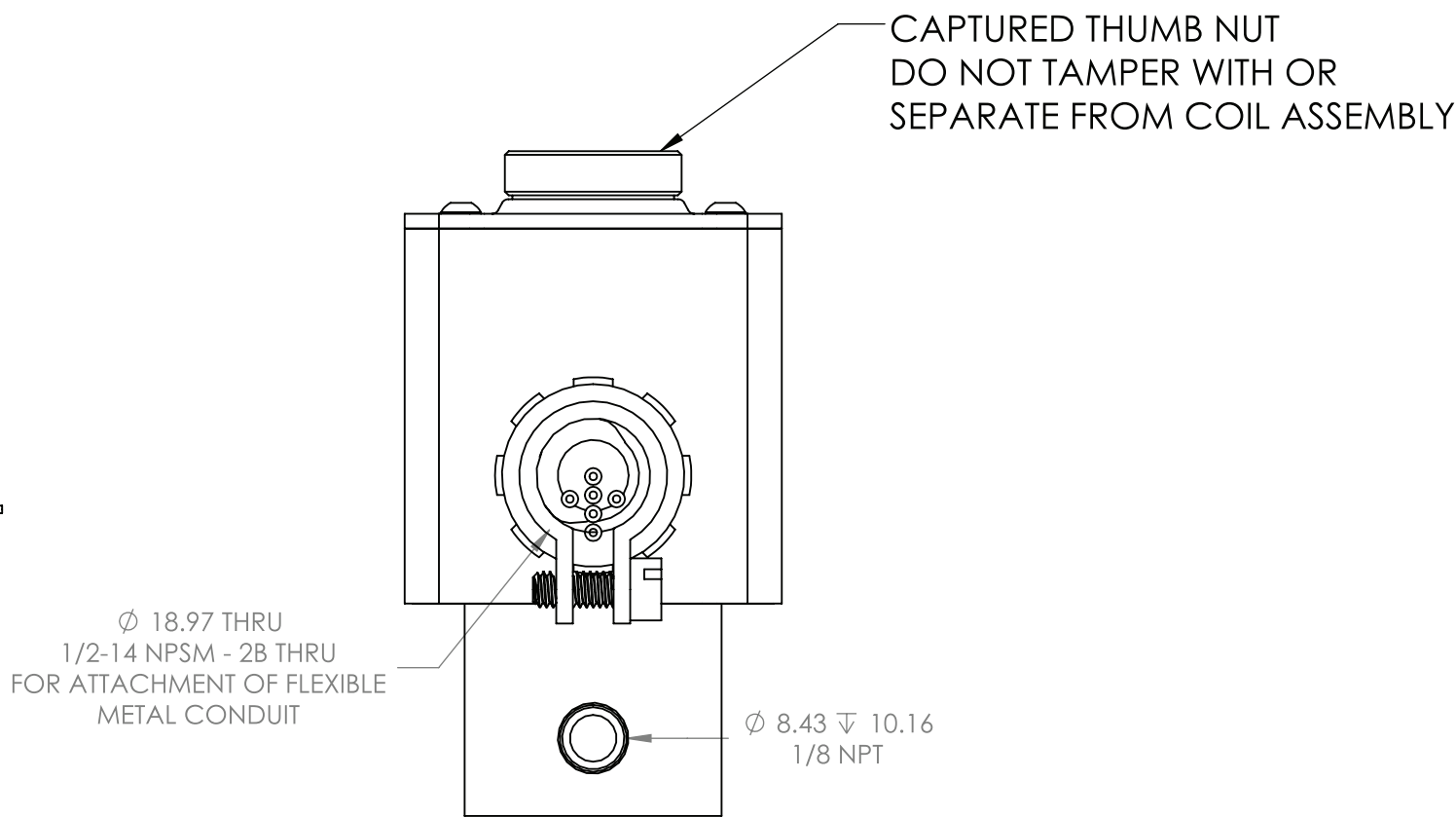
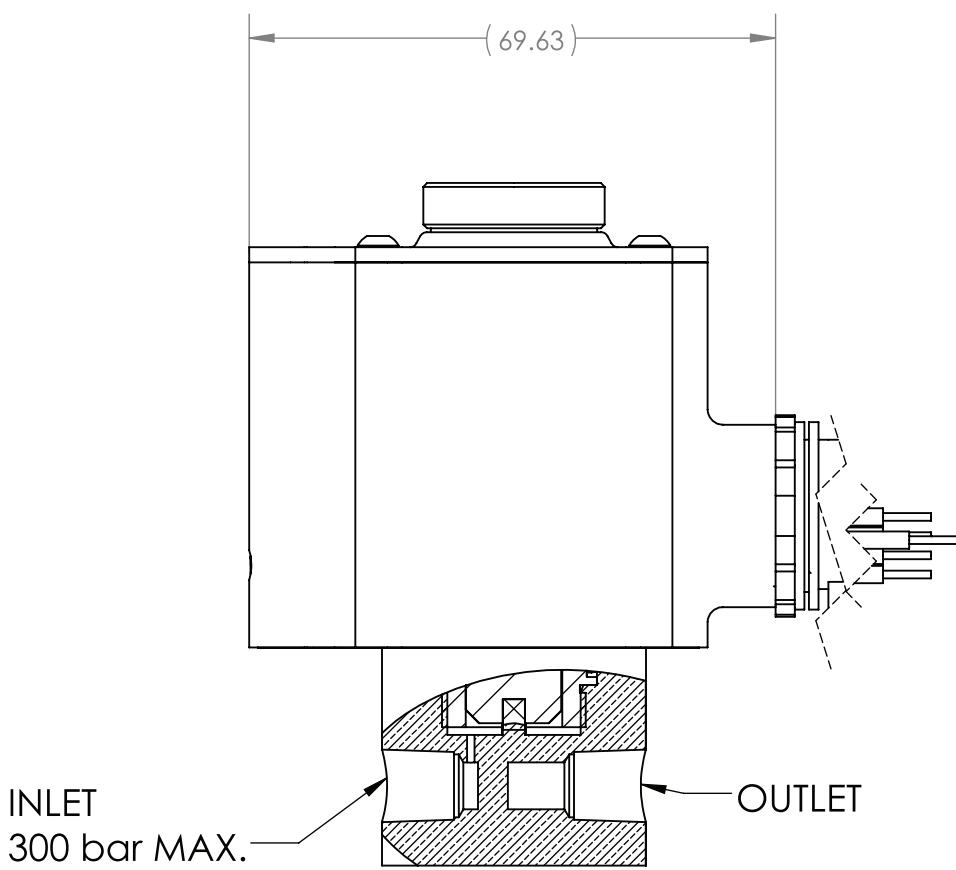
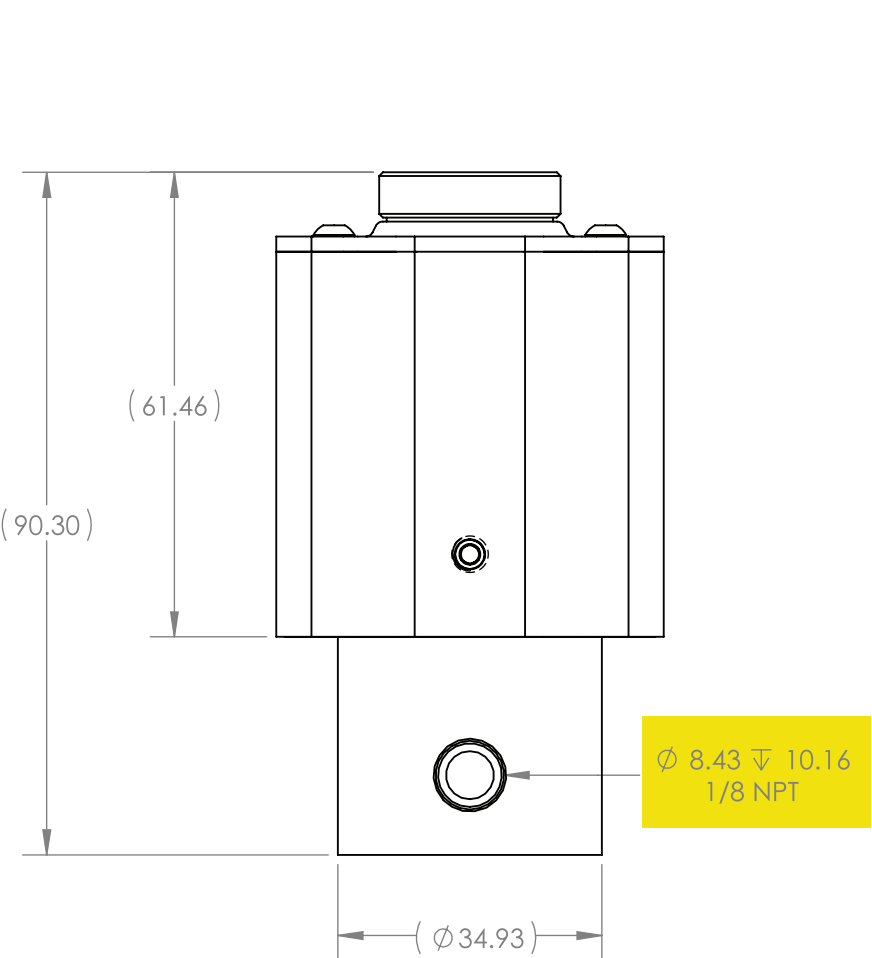
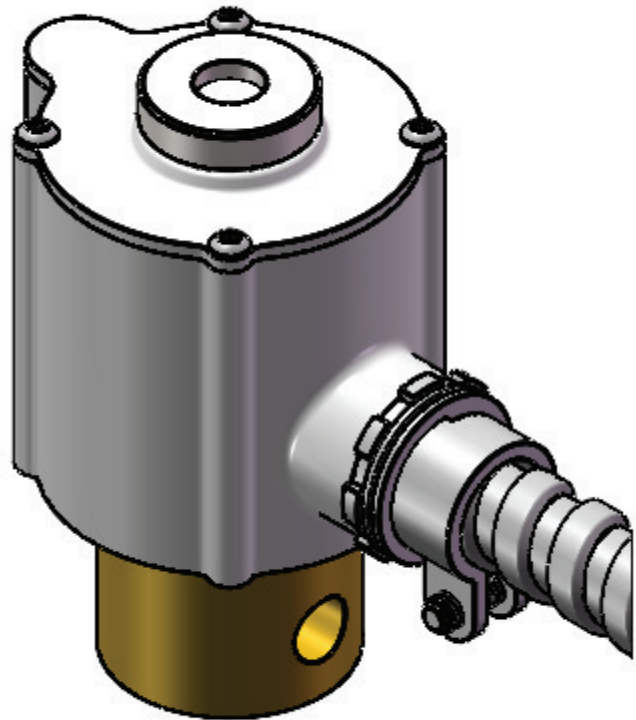
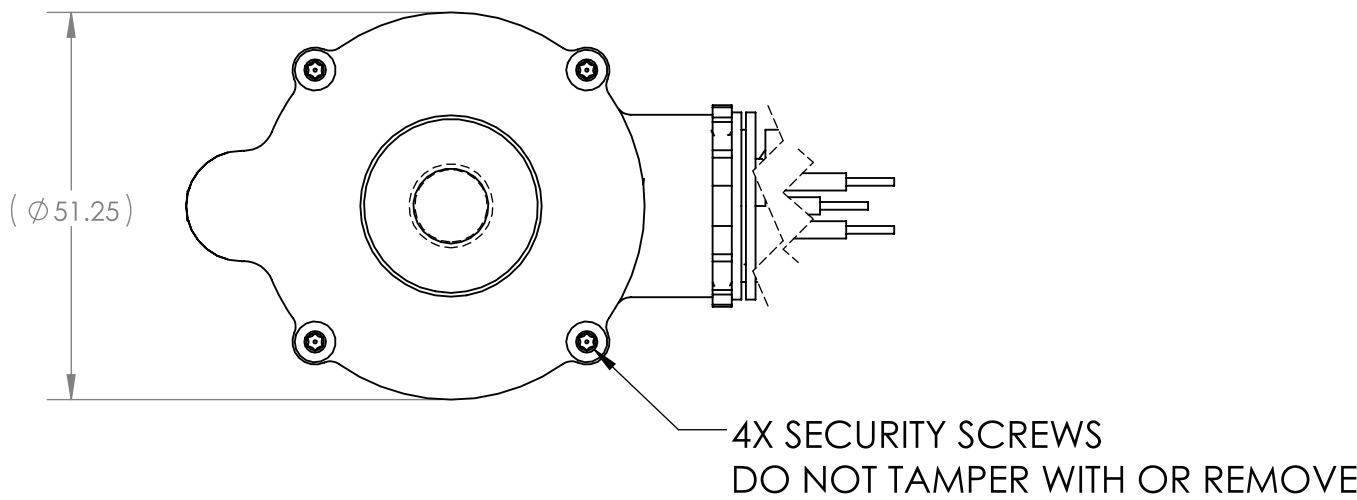



- NOTES:
1. SUPERVISED DIRECT ACTING SOLENOID VALVE. TLX TECHNOLOGIES, PEWAUKEE, WI. PHONE: 262-970-8660, FAX: 262-970-8665
2. ELECTRICAL/ELECTRONIC REQUIREMENTS/CONFIGURATIONS:
- a. VOLTAGE SUPPLY RANGE: 18-30 VDC (24 VDC NOMINAL)
 - b. CURRENT SUPPLY RANGE: .48 TO 1 A
 - c. MAX MONITORING CURRENT: 10mA
 - d. REVERSE POLARITY COMPATIBLE
 - e. SUPERVISORY SWITCH (N.C.) INTERNAL TO ACTUATOR
3. MECHANICAL CONFIGURATION:
- a. FLOW RESTRICTION ORIFICE: 0.787 ±.025 mm
 - b. MAXIMUM WORKING PRESSURE: 300 bar
 - c. TEMPERATURE RANGE: -20°C TO +55°C

Options highlighted can be customized to fit your system. Give us a call to discuss your requirements.



CUSTOMER P/N	REV	UNLESS OTHERWISE SPECIFIED:		NAME	DATE			
		DIMENSIONS ARE IN MILLIMETERS	DRAWN	DPP	12/5/2016	TITLE: HIGH-PRESSURE SUPERVISED DIRECT-ACTING SOLENOID VALVE		
		TOLERANCES:	CHECKED					
		ANGULAR: 1°						
		TWO PLACE DECIMAL ±0.13						
		THREE PLACE DECIMAL ±0.130	ENG APPR.					
		SURFACE FINISH: 3.2 µm MAX.	INTERPRET GEOMETRIC TOLERANCING PER: ASME Y 14.5-2009			SIZE DWG. NO. REV C PA0418 -01		
PROPRIETARY AND CONFIDENTIAL THE INFORMATION CONTAINED IN THIS DRAWING IS THE SOLE PROPERTY OF TLX TECHNOLOGIES. ANY REPRODUCTION IN PART OR AS A WHOLE WITHOUT THE WRITTEN PERMISSION OF TLX TECHNOLOGIES IS PROHIBITED.		EDGE BREAK: 0.13 MAX.						
		MATERIAL	SEE BOM					
		FINISH						
ALL DIMENSIONS ARE POST PLATE						SCALE: 1:1	DO NOT SCALE DRAWING	SHEET 1 OF 2