



# **FIRE SUPPRESSION**

Solenoids & Actuators

Custom Configuration + Fast and Durable  
Compliant to UL, FM, CE, LPCB and VDE



# ELECTRIC ACTUATORS

Patented Components

## Actuator Features

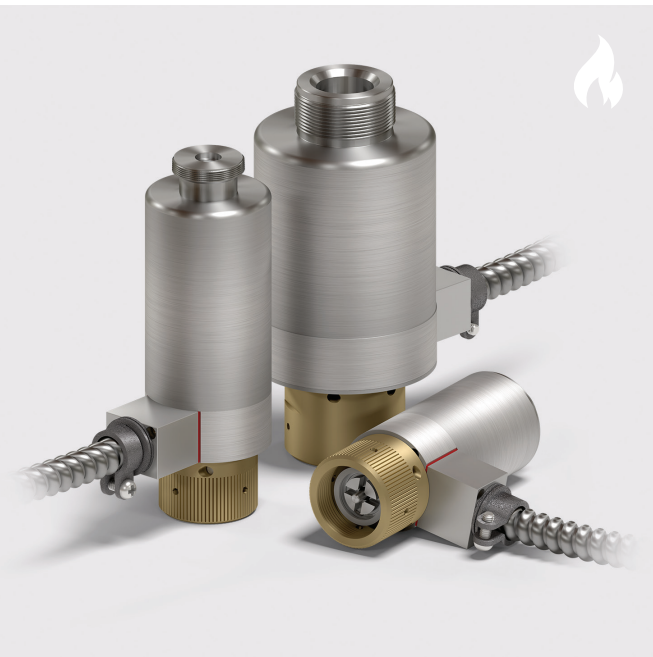
- + Integrated supervision with 6-wire standard
- + Strongest actuation force for package size
- + Ultra-fast response
- + Resettable for future use
- + Customizable configuration
- + Full metal enclosure with factory installed wiring

## How They Help

- + Complies with UL standards and NFPA 2001, Sec. 4.3.4.1.
- + Customizable for system differences
- + Safeguards against tampering
- + Freely rotates for easy installation
- + Optimized for high-pressure and high-speed environments
- + Can be reset and reused

## Optional Add-ons

- + Manual release cap accessory to manually activate system in case of power outage
- + Manual reset accessory to manually reset and reuse actuator



### Supervised Latching Actuator

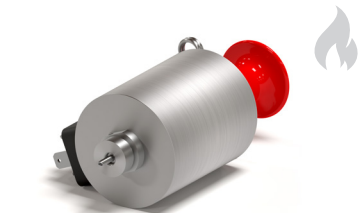
Recognized component to UL 864

Diameter: 44.5 mm  
Length: 129.8 mm  
Firing current: 0.5 Amps  
Minimum firing pin force: 12 lbs/53 N

### Increased Force Supervised Latching Actuator

Recognized component to UL 864

Diameter: 52.4 mm  
Length: 157.7 mm  
Firing current: 0.5 Amps  
Minimum firing pin force: 55 lbs/244 N



### Non-Supervised Standard Electric Actuator

Non-latching  
Built in manual override  
External threads for direct connect

Diameter: 56 mm  
Length: 130 mm  
Firing current: 1.5 Amps  
Firing pin force at end of travel - 3mm: 20 lbs/90 N  
Firing pin force at end of travel: 45 lbs/200 N

### High-Pressure Supervised Latching Actuator

Recognized component to UL 864

Diameter: 75.4 mm  
Length: 161.7 mm  
Firing current: 0.5 Amps  
Minimum firing pin force: 112 lbs/500 N





## EVENT RECORDER

- + Patent pending
- + Time-stamped history log of past events
- + Helps explain system activation
- + Provides proof of installer work and gives historical data for risk mitigation
- + Compatible with our electric actuators



## PNEUMATIC ACTUATORS

- + Compliant to UL & NFPA standards
- + Customizable for various system pressures, dimensions, and other requirements
- + Works with our electric actuators to activate your full system

### Non-Supervised Pneumatic Actuator

### Supervised Pneumatic Actuator

Patented Component

- + Integrated installation detection
- + Full metal enclosure with factory installed wiring



## DIRECT-ACTING SOLENOIDS

Patented Components

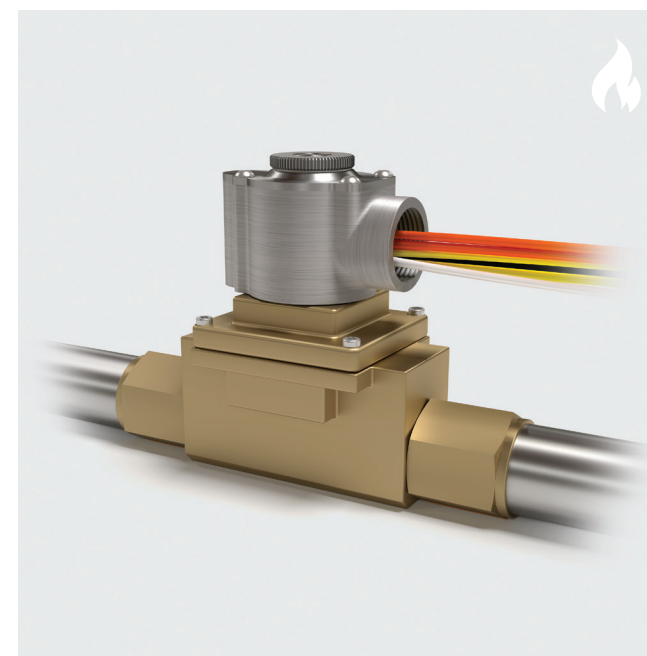
- + Compliant to UL & NFPA standards
- + Normally closed seat valve
- + Integrated installation detection
- + Full metal enclosure with factory installed wiring
- + Removable coil for safe maintenance and testing
- + Freely rotates for easy installation

### Supervised Direct-Acting Solenoid

Able to withstand up to 172 bar

### Supervised High-Pressure Direct-Acting Solenoid

Able to withstand up to 300 bar



## SUPERVISED PILOT-OPERATED SOLENOID VALVE

Patented Component

### For Pre-action and Deluge Systems

- + Complies with UL standards and NFPA 13: Sec. 8.3.1.2.1
- + Integrated installation detection
- + Customizable interface options
- + Position-adjustable coil with captured nut





*Contact our engineers about your fire suppression needs.*

tlxtech.com +1 262-372-2165